

# Newark Ahead Green Gateways

The proposals call for a network or system of **Green Gateways** throughout the City.

Historically, the image of Newark is one of the distinct but toxic sight of tank farms, steel mills and refineries. The Green Gateways, in contrast, will rebrand the City in new terms, as a **vital and vividly greener Newark**.

Each Gateway throughout the City can be envisaged as a **green acupuncture point** that provides the following:

An **embracing threshold of living landscape**.

An acoustic and memorable drive-over signal that will alert drivers and pedestrians of their entry to the City.

A point of dissemination for the Greening of the City as a whole.

The **Green Gateways** are not merely ornamental but contribute to bio-remediation of soils and waters, increases in bio diversity, carbon sequestration, water harvesting and mitigation of the urban heat island effect.

Each Gateway is a potential for the **flow and growth of the city** as a whole



Site 49: Mount Prospect at Tiffany Boulevard



Site 11: Route 21 & Miller Street





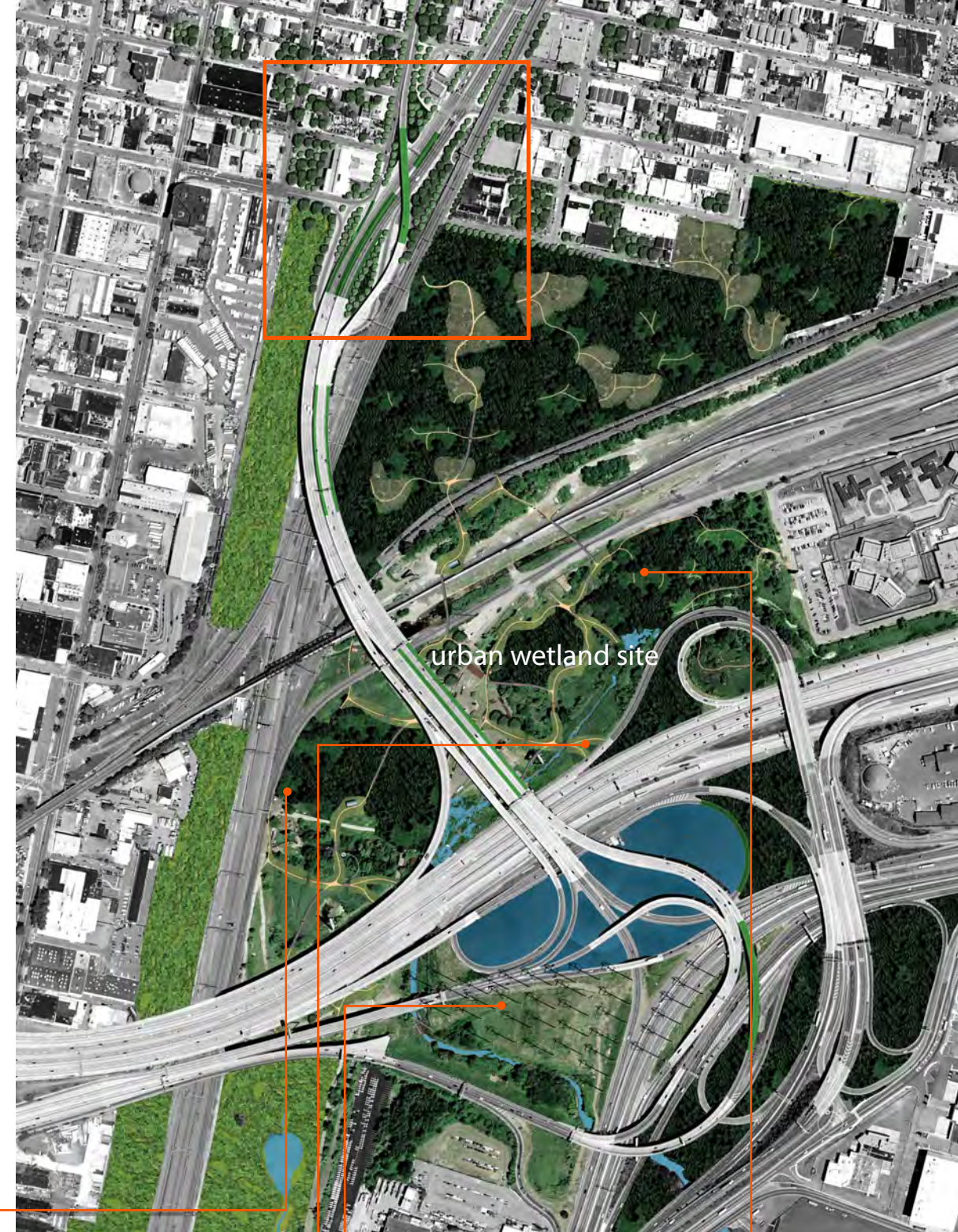


## Route 21 & Miller Street

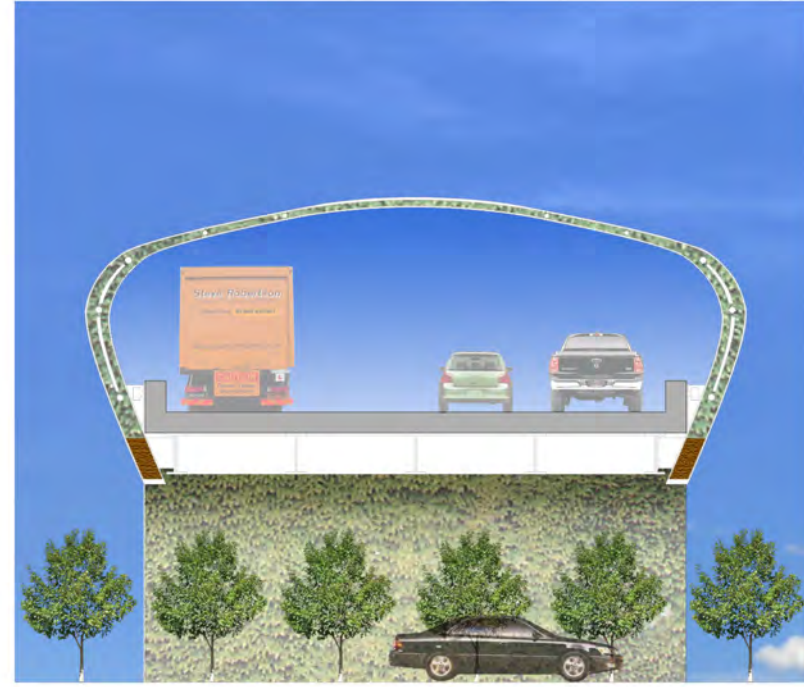
For this high speed, City scale Gateway the proposal is to create awareness of the transition from fast moving travel, to an environment that requires a more balanced relationship between the vehicle and the pedestrian. A threshold to a City that advocates this balanced relationship, a more environmental and pedestrian aware City.

A living green covered bridge, constructed of evergreen ivy, and drive-over acoustic discs will mark the threshold to the city.

This Gateway will also provide an entrance to a proposed bio-remediation urban wetland to the southeast, currently a brownfield site.



urban wetland site



Cross Section: Planted Ivy Growing within structural system



Elevation: Lettering as part of acoustic panel system



Night Elevation: Integral Lighting system

### Key Features:

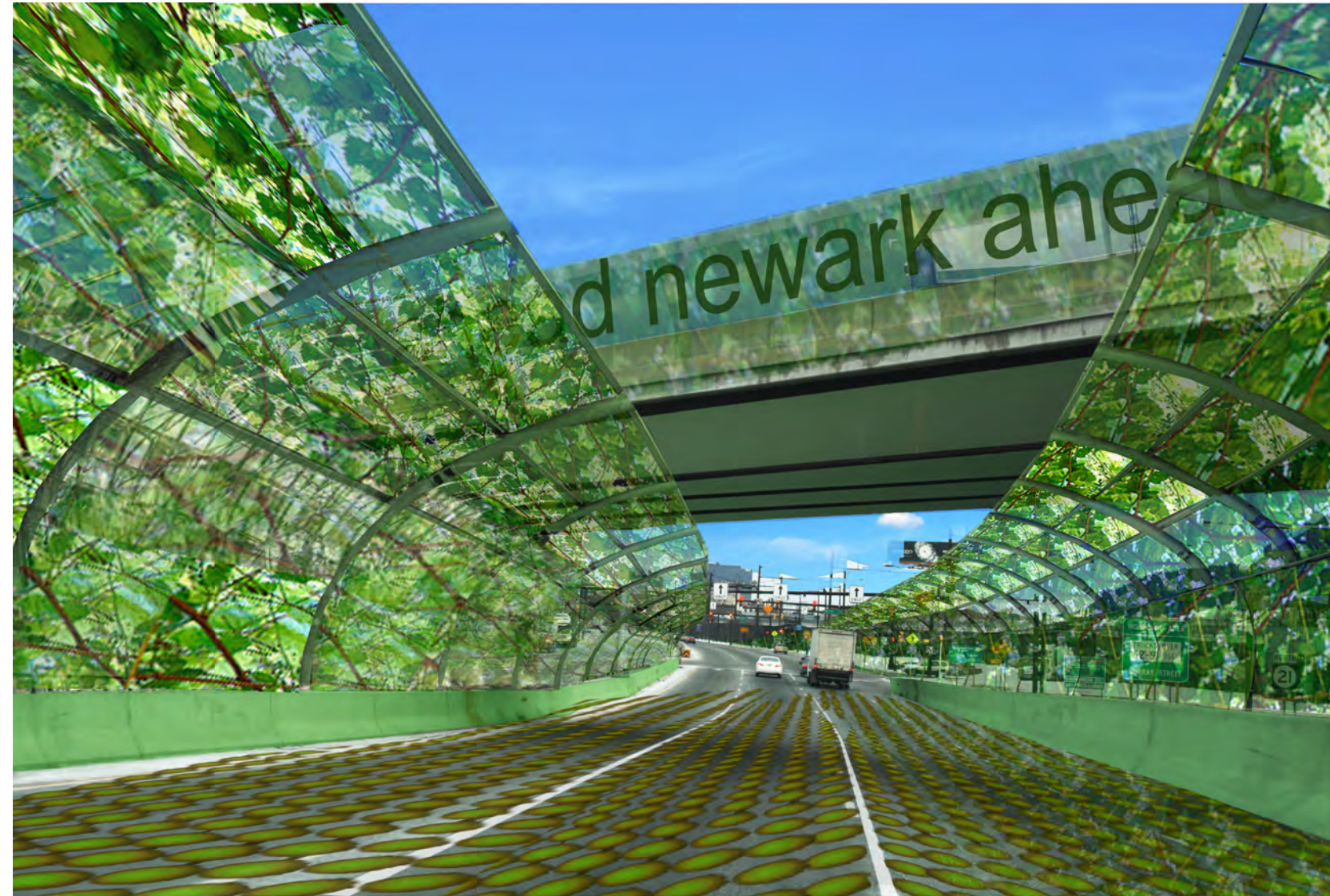
Living Avenue of green as entrance to City.

Audible transition for drivers as they activate drive-over acoustic discs.

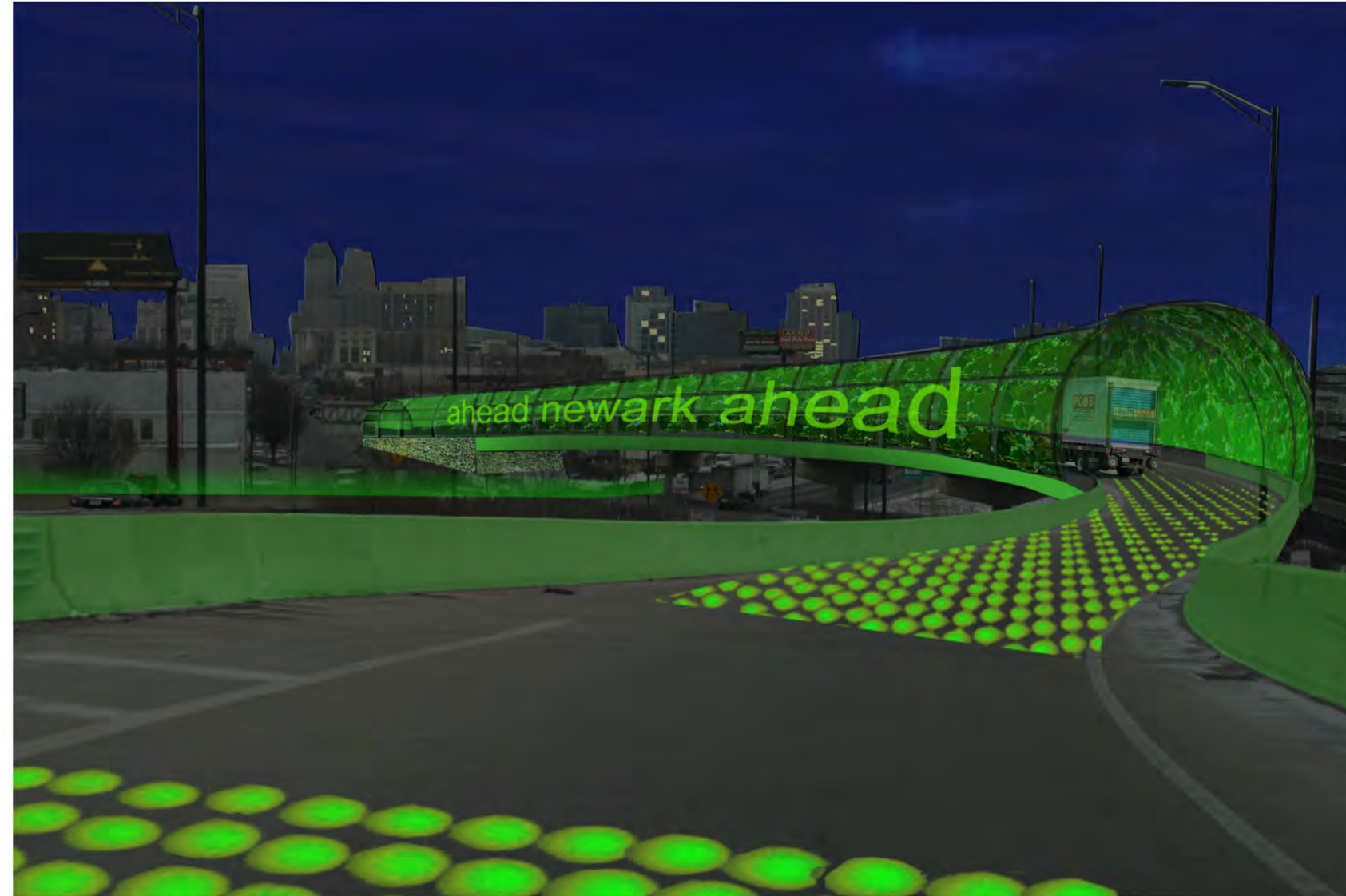
Possible energy gains from vibration/depression of drive-over acoustic discs to power lighting etc.

Improvement of pedestrian opportunity through new crossings and reduction in automobile speed and noise.

24hr identity and marker for Newark, with a potential for flow and growth to other parts of the City.



Approach from Route 21 underpass



Approach from Route 21 flyover





# Mt. Prospect at Tiffany Boulevard

This Ward/Neighborhood scale Gateway will provide identity and service for the area through the construction of a **small water farm and garden** that will collect rainwater and grow produce for reuse within the neighborhood. This farm can also house facilities for **maintenance of the greenery** surrounding this area.

Drive-over acoustic discs will signal entrance into an area of the city where **transportation priorities are re-aligned towards pedestrian movement**.

This Gateway will also aim to **combine the greenways nearby**; the linear park, waterway and disused rail route as its influence grows and flows outwards.



Re-application of disused nearby rail line

## Key Features:

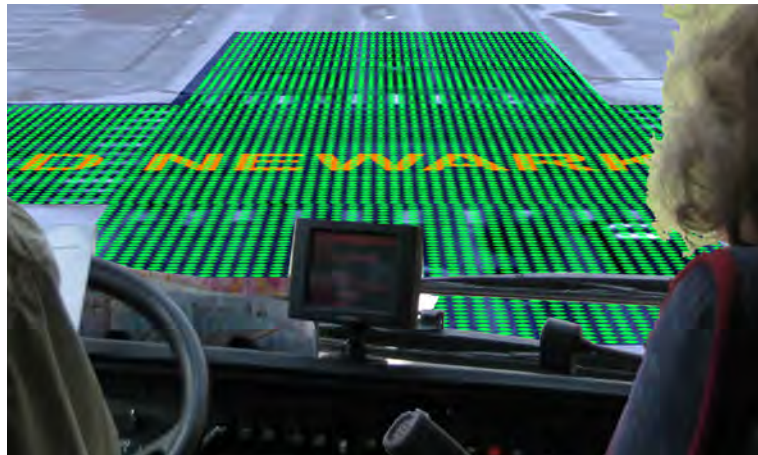
Environmental and functioning contributor to the Neighborhood/City.

Audible transition for drivers as they activate drive-over acoustic discs.

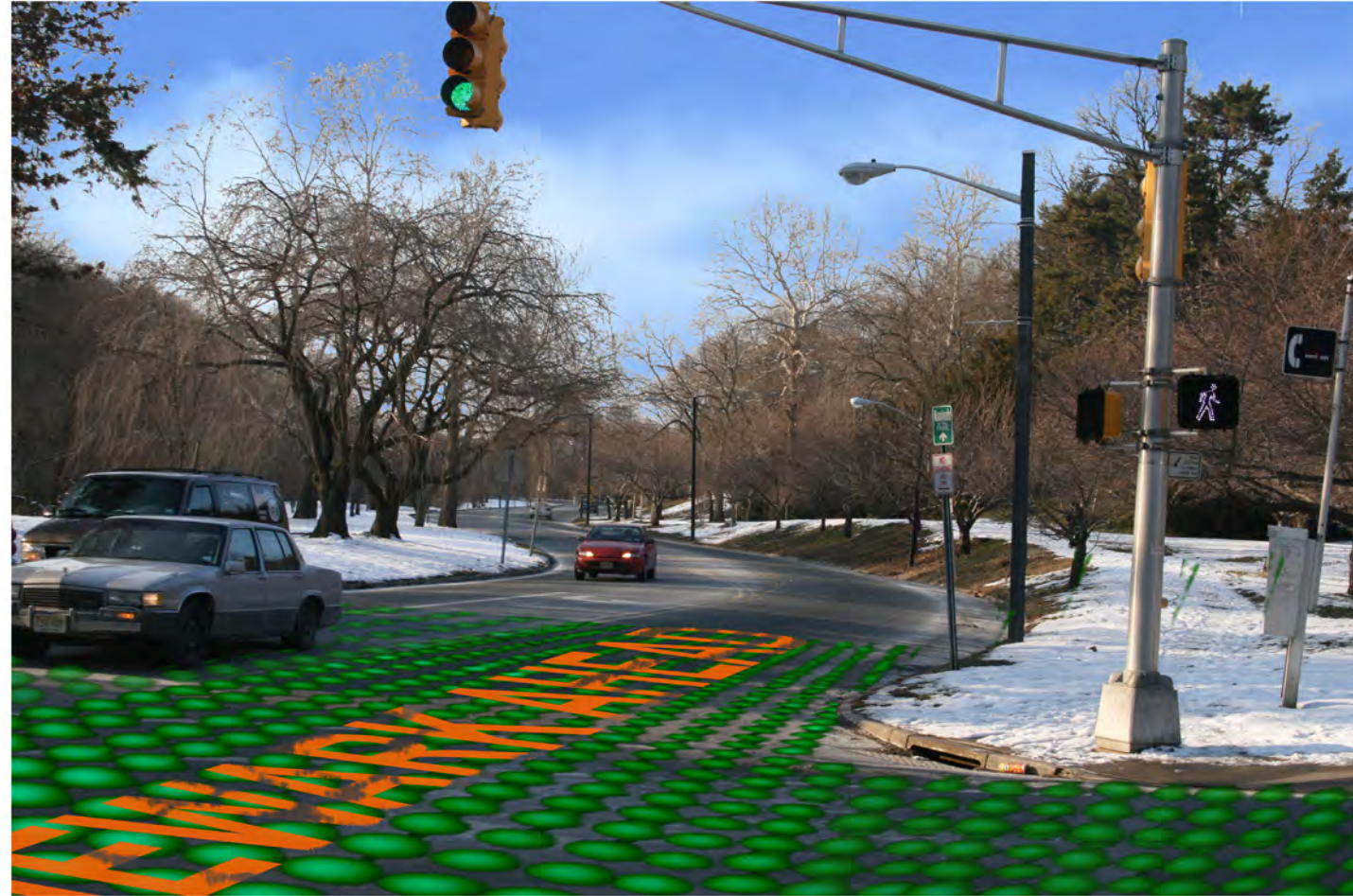
Possible energy gains from vibration/depression of drive-over acoustic discs to power lighting etc. ,

Improvement of pedestrian opportunity through new crossings and reduction in automobile speed and noise

24hr identity and marker for City with **potential for flow and growth to other parts of City**.



View from vehicle approaching gateways



Junction at Mill St. and Union Ave.



View South towards Prospect Ave from Union Ave.



This is Newark! - Gateway Design Initiative 2009

**terreform**  
center for advanced urban research

www.terreform.info  
180 Varick Street #930  
New York, NY 10014  
tel: 212-627-9120  
fax: 212-627-9125  
email: sorkin@thing.net